

tea selection from Postcard Teas

English breakfast
Earl Grey
Darjeeling
Rooibos
Peppermint
Camomile
Jasmine
Lapsang
Green Oolong



Champagne

125ml btl

Laurent-Perrier La Cuvée	20	115
Laurent-Perrier Cuvée Rosé	30	160
Laurent-Perrier Grand Siècle Itération No 25	45	245
2015 Laurent-Perrier Brut Millesimé		180
Laurent-Perrier Héritage Brut		220

0% sparkling

125ml btl

Copenhagen Sparkling Tea BLÅ (Blue) 0%	15	60
--	----	----



MAISON FRANÇOIS AFTERNOON TEA - 35

with a glass of Laurent-Perrier La Cuvée 50
with a glass of Laurent-Perrier Rosé 60
with a glass of Laurent-Perrier Grand Siècle 75



with a glass of Copenhagen Sparkling Tea BLÅ 0% alc 45

sandwiches

oeufs mimosa, watercress
cucumber, cervelle de canut
rillettes de thon, chilli, basil, avocado
vadouvan chicken
jambon beurre

supplément caviar (15g/30g) 50/100

pâtisserie

fig tart
vanilla gâteau
hazelnut choux
pear & chocolate slice

babkas

hand-braided, buttery brioche dough, twisted with different fillings.

chocolate & hazelnut
vanilla

served with

strawberry jam, hazelnut spread, clotted cream

unlimited still and sparkling water 3.5pp

Please inform your server if you have any allergies or special dietary needs. A discretionary service charge of 15% will be added to your bill.

Postcard Teas selection & tasting notes

English breakfast

A rich and robust whole-leaf blend of black teas from family-run farms in India and Japan.

Earl Grey

The finest cold-pressed

bergamot oil selected and

pressed by Gianfranco Todisco

complimented with aromatic

black teas from small farms in

India. Bright and citrusy with

a fruity, grapefruit-like taste.

Darjeeling

A full-bodied classic second

flush Darjeeling made from

seed-grown trees at Mineral

Spring Co-operative. Aromatic,

smooth and comforting.

Rooibos

A caffeine-free infusion from

South African Cederberg

Mountains, rich like a breakfast

tea with a fruity caramel like

aftertaste.

Peppermint

Hand-picked organically grown

peppermint. Clean, herbaceous

and cooling.

Jasmine

A delicious, refreshing jasmine

tea with a light scenting which

allows the sweet, fruity flavour

of the base tea to shine.

Carmole

A soothing carmole tisane

grown organically in Pitomaca

in Croatia. Round and generous

on the palate with a lovely,

long sweetness.

Lapsang

Sri Lankan black tea smoked

over cinnamon wood,

imparting a fruity, spicy

and deeply smoky taste.

Green Oolong

A lightly oxidised rolled green

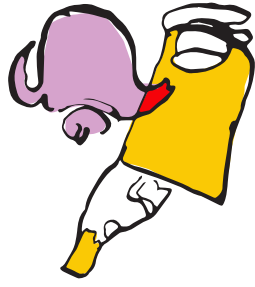
oolong from Ming Jian. Its

light, floral aroma and vanilla

sweetness make this a ideal

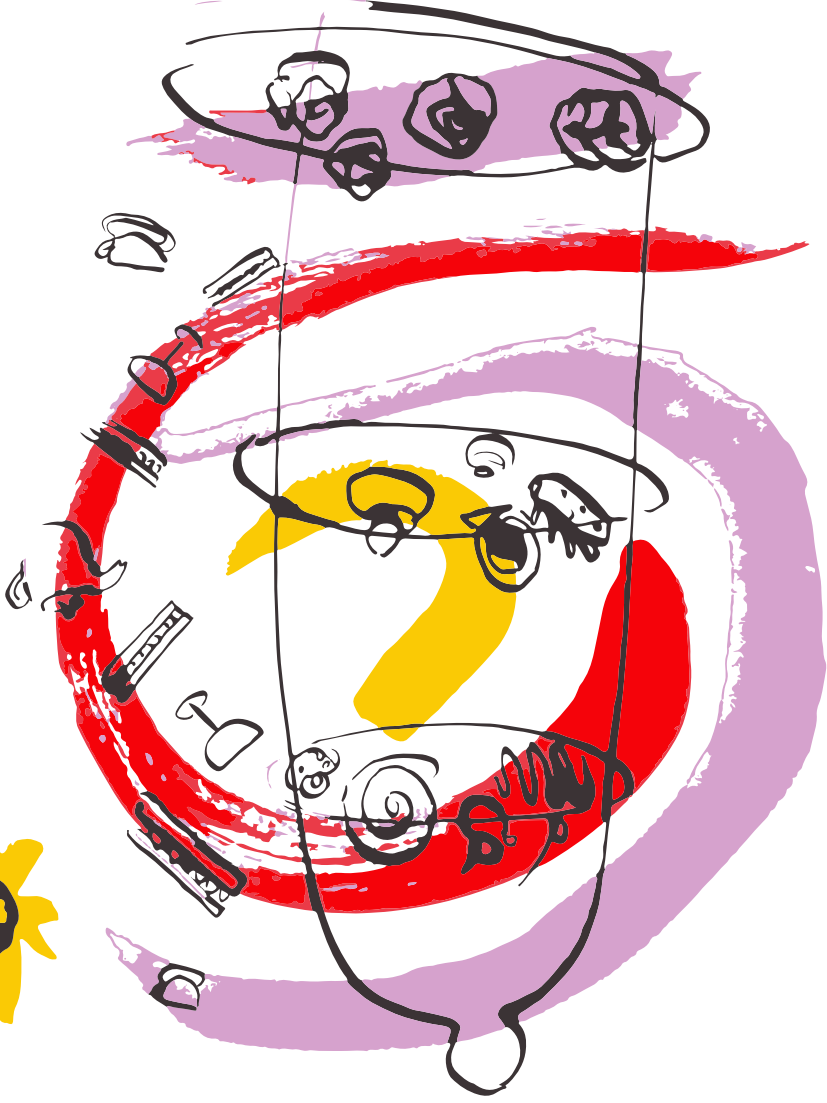
place to start for people new

to oolong.



maisonfrancois.london
@maisonfrancois

MAISON FRANÇOIS



AFTERNOON TEA

34 Duke Street St James's, London SW1Y 6DF