



The Enchanted Treehouse Afternoon Tea



Our enchanting Faraway Tree Afternoon Tea brings the magic of a whimsical world to your table. Enjoy a delightful selection of handcrafted, in-house pastries and playful seasonal treats, all served with award-winning Birchall Teas

• The Enchanted Treehouse Afternoon Tea •

Warm and fluffy homemade classic and golden raisin scones, strawberry preserves and a dollop of clotted cream **v**

Sandwiches

Egg mayonnaise on spinach bread **v**

Salt beef and grain mustard aioli in brioche

Cheddar and onion chutney on tomato bread **v**

Smoked salmon, lemon and dill cream wrapped in rye

Chicken mousse, tarragon and celery in a charcoal tartlet

Pâtisseries

Nutty fig frangipane with mascarpone cream **v**

Rosemary & rhubarb crème brûlée **v**

Zingy lemon meringue tart **v**

Dark chocolate marquis **v**

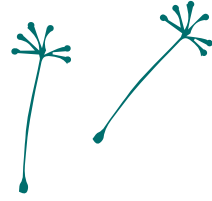
Home baked madeleines with vanilla ganache

Chef's choice of macarons - surprises taste best! **v**



• £46 per person •





• Savoury Afternoon Tea •

Caramelised onions & rosemary scones
black garlic houmous v

Sandwiches

Egg mayonnaise on spinach bread v
Salt beef and grain mustard aioli in brioche
Cheddar and onion chutney on tomato bread v
Smoked salmon, lemon and dill cream wrapped in rye
Chicken mousse, tarragon and celery in a charcoal tartlet

Savoury Bites

Honey & mustard roasted cocktail sausages
Ham hock & pea croquettes
Spicy sticky cauliflower bites v
Sweet & smoky chicken tenders



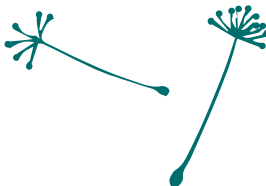
• £46 per person •

• Cream Tea •

Warm and fluffy homemade classic and golden raisin scones,
strawberry preserves and a dollop of clotted cream v



• £14 per person •



• Pick Your Perfect Tea •

Black Tea

• Darjeeling •

Often referred to as the “Champagne of Teas”, Darjeeling is an exquisitely delicate tea that has been cultivated high up in the foothills of the Himalayas since the 19th century. Usually taken without milk.

• Virunga Afternoon Tea •

A lighter, single origin tea, sourced from the finest tea gardens in Rwanda, found close to the country’s border with the Democratic Republic of Congo and the Virunga National Park. Elegant and refreshing, its smooth and delicate liquor make it particularly good for after lunch or in the afternoon. Can be served with milk or brewed lighter and taken without milk.





• Lapsang Souchong •

Lapsang Souchong is a black tea from China with a distinctive, smoky taste and aroma - the unique result of drying tea leaves over pinewood fires. It is a traditional British favourite and is said to have been the preferred tea of Winston Churchill himself. Usually taken without milk.

• Virunga Earl Grey •

Famously fragrant, Earl Grey is a classic British afternoon tea choice and our Virunga Earl Grey combines the bright, rich flavour of East Africa's finest tea with blue cornflowers and the enduring aromatic appeal of bergamot. Can be taken with or without milk.

Oolong & Green Tea

• Jasmine Tea Pearls •

Our Jasmine Tea Pearls combine the mild sweetness of Chinese green tea with the soft floral notes of jasmine flowers. Once steeped, these delicate pearl-shaped treasures unfurl to release the intoxicating fragrance of jasmine blossoms and a pale, light bodied liquor that can be enjoyed throughout the day.

• Oolong •

Our complex, single origin oolong formosa is grown high up in the mountains of Taiwan. It produces a fresh, light and delicate liquor that can be enjoyed at any time but, best of all, when you need a moment of calm or clarity. Usually never taken with milk.

• Coffee •

Espresso | Caffè Latte | Cappuccino
Americano | Flat White



• Children's Afternoon Tea •



Let the kids enjoy their very own three-tiered afternoon tea full of delicious sweet treats and savoury bites. Served from Midday - 5pm

Two & three course children's menu also available
- just ask your server!

Finger sandwiches

Ham & cheese
Cream cheese & cucumber **v**

Vegetable dippers

Carrot, cucumber and sweet pepper sticks,
houmous dip **v**

Sweet treats

Chocolate brownie delight lollipop
Chocolate eclairs
Vanilla superberry cheesecake
Candy floss

• £16 per person •

• Drinks •

Vegan & natural juices

Natural ingredients, vegan, gluten free
Mango
Peach
Multivitamin Tropical
Strawberry



• ALL £4.5 •

