



Shelter Hall

Christmas 2026

on's Food & Drink Hall (S-H) Brighton's Food & Drink Hall (S-H) Brighton's Food & Dri



Originality  The Home of Originality  The Home

Come for the Food, Stay for Everything Else

Shelter Hall is a reimagined food and drinks hall on Brighton Beach, set within a historic seafront location. Featuring seven rotating kitchens, two bars, a large sea-view terrace and five balconies, it's the place to settle in.

Located between the Palace and West Piers, Shelter Hall is just a short walk from Churchill Square, the North and South Lanes, and Brighton Train Station.



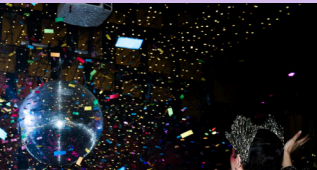
Team Meals



Full Venue Hire



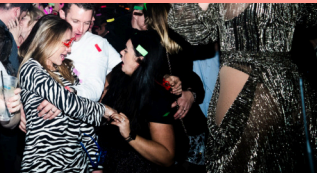
End of Year Celebrations



Flexible Spaces

Experienced Team

Food & Drink Options



Christmas Specials



Private Parties



Booking Offer (S-H) Booking Offer (S-H) Booking



Early Booking Offer

The bigger the party, the bigger the perks!

Hosting a private event this festive season? Whether it's a corporate party or a big celebration with friends, we'll make it even more worthwhile.

Book the mezzanine or Skylark for November or December, and for every 25 guests attending, you'll receive a £75 voucher to spend during your event

- Valid for private events between 1 November – 30 December
- Minimum of 25 guests required
- Voucher redeemable on the event date only
- Bookings must be made before 31 July
- Applies to mezzanine and Skylark private hires only
- Does not apply to events booked via an agent

To claim, quote 'Perks Booking Offer' when enquiring



The Main Hall The Main Hall The Main Hall



Our Spaces The Main Hall

With seating for up to 230 guests or 400 standing, surrounded by all seven of our kitchens and our impressive 10-metre bar, the main hall is the ideal setting for large-scale events with the option to bring in your own entertainment and decor.

Capacity	230 seated, 400 standing
Food & Drinks	Pre orders, buffet style, order at counter or via QR Code
Accessibility	Fully accessible & lift access to toilets
Tech	AV equipment, staging blocks & more available



The Main Hall (S-H) The Main Hall (S-H)





The Mezzanine (S-H) **The Mezzanine** (S-H) **The Mezzanine** (S-H)



Our Spaces

The Mezzanine

Semi-circular in design, with floor-to-ceiling windows and uninterrupted views across the seafront and Brighton's iconic piers, this impressive space is ideal for larger groups. The area offers exclusive access to our five balconies and bespoke layout options.

Capacity

105 seated, 150 standing

Food & Drinks

Pre orders, buffet style, order at counter or via QR Code

Accessibility

Fully accessible & lift access to toilets

Tech

AV equipment, staging blocks & more available



Skylark Bar  **Skylark Bar**  **Skylark Bar**



Our Spaces

Skylark Bar

Tucked away on our first floor with stunning sea views, the Skylark Cocktail Bar is a fantastic space for groups of up to 50. Hire includes access to a private bar with bespoke layout options and the ability to play your own music.

Capacity	30 seated, 50 standing
Food & Drinks	Pre orders, buffet style, order at counter or via QR Code
Accessibility	Fully accessible & lift access to toilets
Tech	Sound system & temperature control



Private Dining Room Private Dining Room



Our Spaces Private Dining Room

The Private Dining Room is located on the first floor with sea views towards the West Pier. Featuring a 75" wall-mounted TV, integrated music system and air conditioning, it's the perfect setting for private dining, meetings or intimate events.

Capacity	6-12 seated
Food & Drinks	Order at counter or via QR Code
Accessibility	Fully accessible & lift access to toilets
Tech	Wall mounted TV, sound system & temperature control



Winter Igloos (S-H) **Winter Igloos** (S-H) **Winter Igloos** (S-H)



Our Spaces

Winter Igloos

Enjoy stunning views of Brighton's seafront in the comfort of your own private, heated, and beautifully decorated igloo. Perfect for groups of 2-16 people. If you're looking for a unique, cozy setting, this is for you.

Capacity	2-16 seated
Food & Drinks	Order via QR Code
Accessibility	Fully accessible & lift access to toilets
Tech	Bluetooth speaker, heater



Full Venue Hire  **Full Venue Hire**  **Full Venue**



Our Spaces

Full Venue Hire

For larger event and full takeovers, Shelter Hall offers whole venue hire, providing a flexible and impressive space for up to 620 guests. You'll have the freedom to plan your ideal layout across all of our spaces, including the main hall, mezzanine, Skylark Cocktail Bar, five balconies, private dining room and terrace.

Capacity	620
Food & Drinks	Pre orders, buffet style, order at counter or via QR Code
Accessibility	Fully accessible & lift access to toilets
Tech	AV equipment, staging blocks & more available



Food & Drinks



Food & Drinks



Food & Drinks



Food & Drinks



Food & Drinks



Digital Vouchers

Allow your guests the freedom to order from all kitchens & bar with pre paid digital vouchers of your desired amount

Pre-Order

Pre order from our event platter menus for buffet style dining and pre order arrival drinks to be tray served

Guests Pay

Your guests order food & drinks straight from our kitchens & bar, or via QR code, and settle the bill themselves



Shelter Hall

Lydia Champion, Sales Manager

Lydia@markethalls.co.uk

on's Food & Drink Hall  **Brighton's Food & Drink Hall**  **Brighton's Food & Dri**